

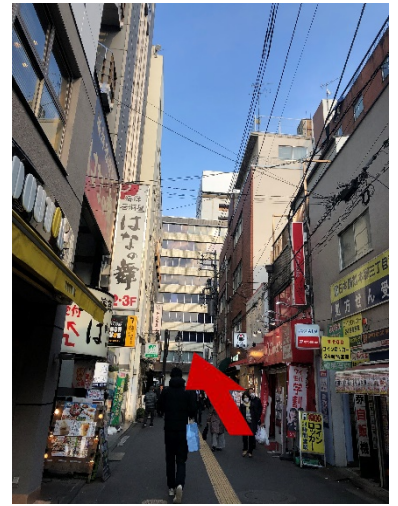
Access to Kojima Hall from Marunouchi Line, Hongo Sancho-me Station



1. Exit the Gate of Marunouchi Line, Hongo Sancho-me Station. Follow the signs towards "Hongo-dori Ave."



2. Turn right.



3. Go straight towards Hongo-dori Ave.



4. Turn left and go straight on Hongo-dori Ave. for about 100m.



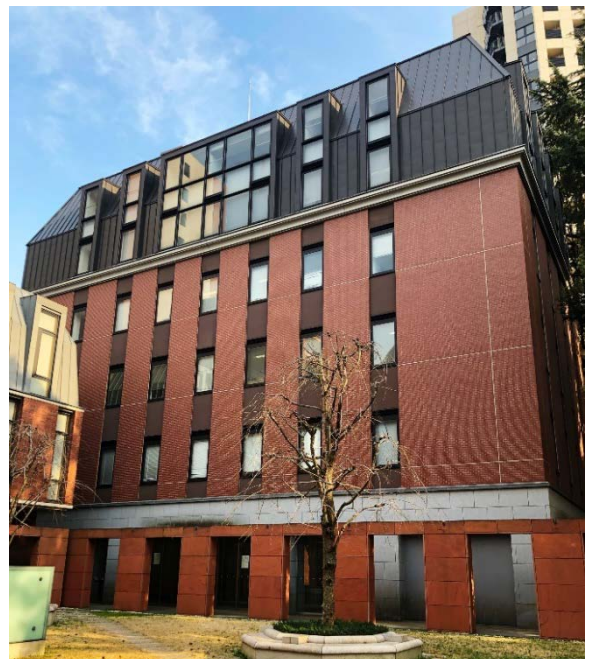
5. There will be "Hongo Sancho-me" large intersection.



6. Cross the pedestrian crossing and continue straight.



7. Walk for about 300m, and you will find the small black gate (lawn yards surrounded by reddish brown buildings are seen behind it) on your right-hand side.



8. Entering through the gate, and **Kojima Hall** (the six-story building) is to the right.